

Print Shop

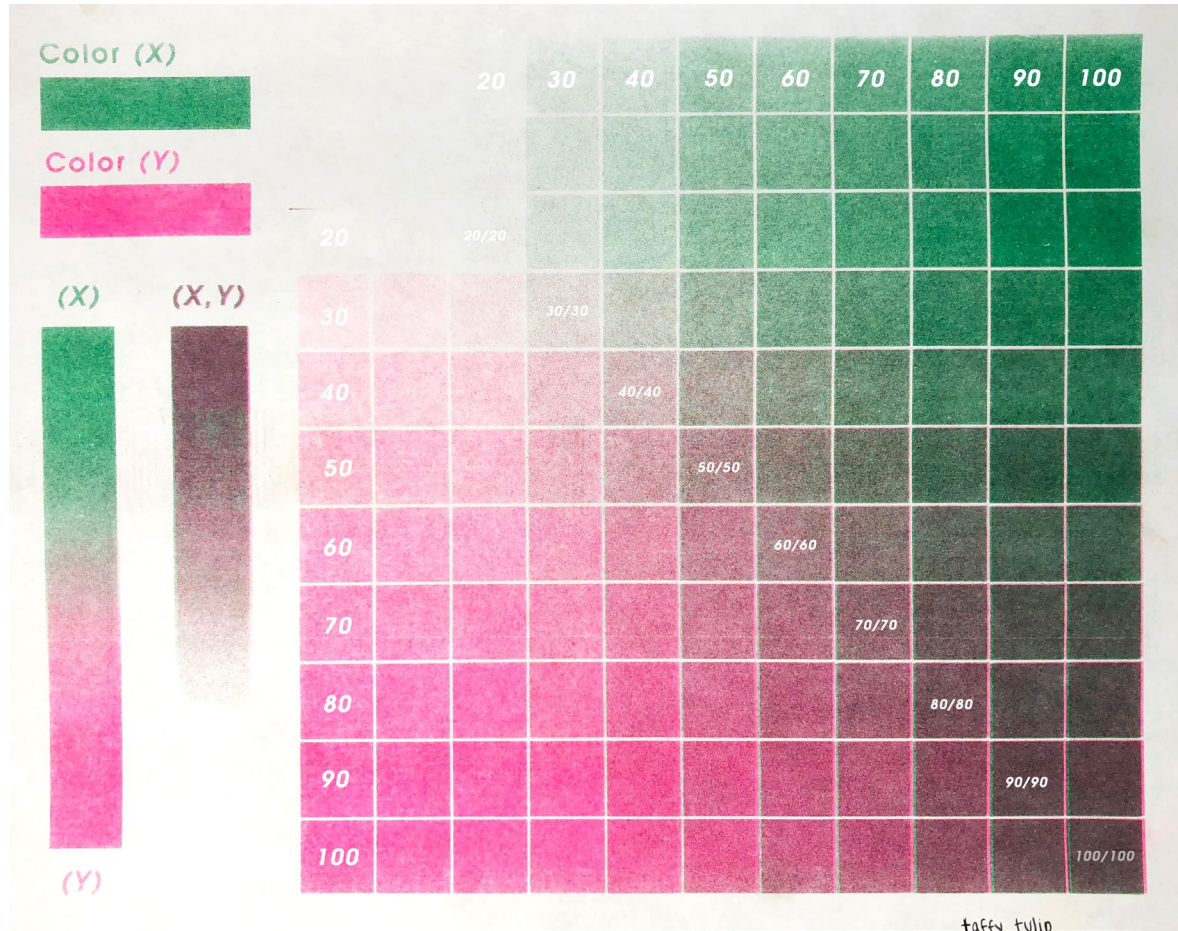
LA

Risograph

Introduction

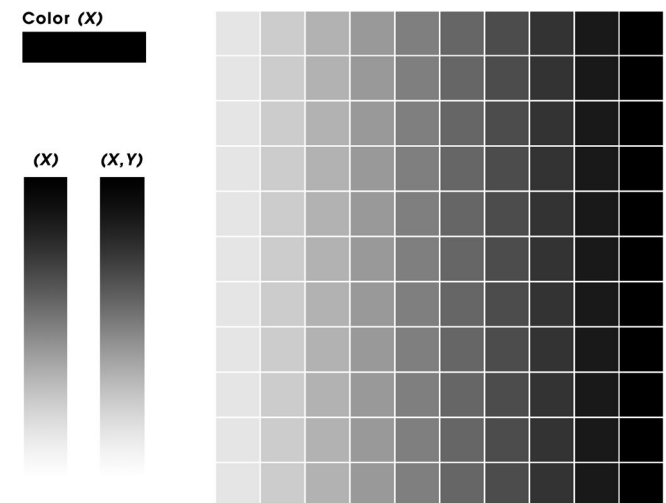
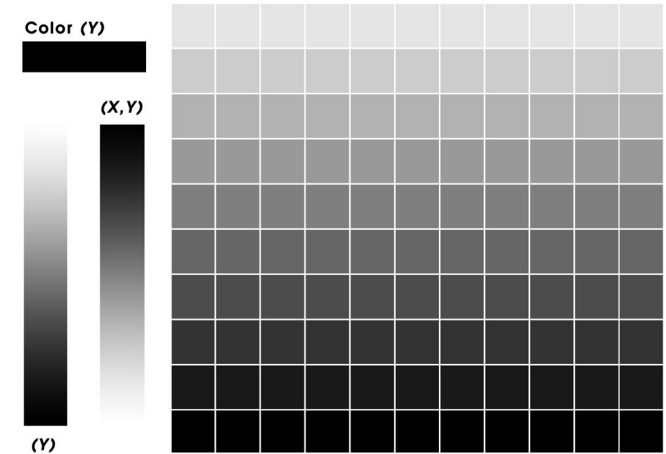
# Understanding Color Breakdowns

Much like Silkscreen, Risograph prints one color at a time, but due to its transparency you can lay multiple colors on top of one another in different levels of grey to create an extended color pallet. The lightest levels being at 20% going up to its most vibrant at 100%.



Color X runs horizontally, while Color Y runs vertically in levels of 10. In a two color test this chart creates all 117 possible shades for a two color combination.

Here are the two layers that created the color test on the right

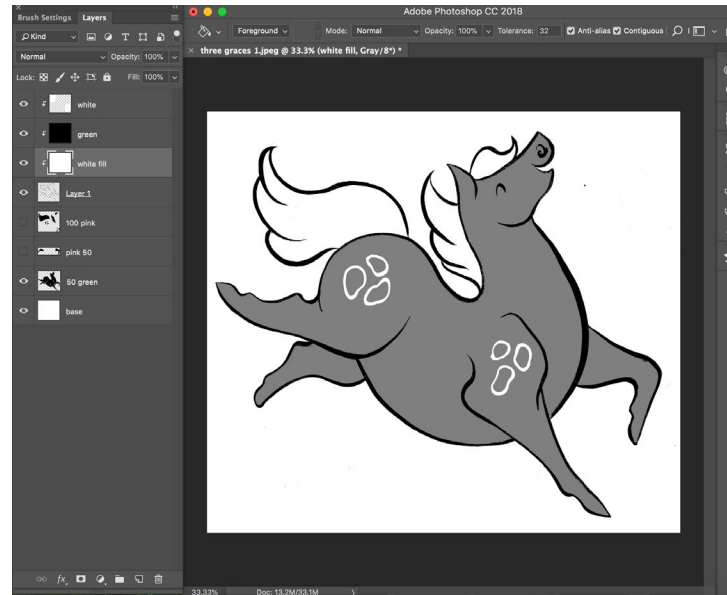


# Seperating Layers - Digitally

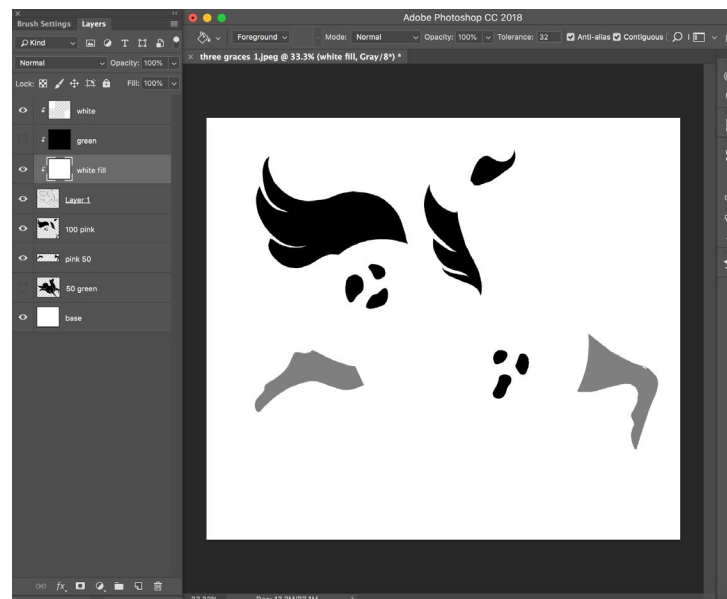
Seperating your printing layers in photoshop gives you the advantage of being able to control the levels of grey in your images layers much more accurately.



Using the opacity bar, and referancing the color test, set your layers to the levels of grey you would like to print in. It's best to label your layers for easier referance



Seperate your colors by making visible only one color at a time and saving those layers as seperate jpegs- labeling which jpeg is Color X and Color Y



Ask your printer for help if you think you may need it. It never hurts to double check!

# Seperating Layers - Analog

You can also seperate your colors using layers of tracing paper and drawing the seperate colors on different pieces of paper like so. This method is great is you want to show off a medium's natural texture. You can scan these layers indivudally and lay them together in photoshop to match the registration properly. Ask your printer for help if you think you may need it.

Color X



Color Y



It never hurts to ask your printer to double check your layers so you can get the accurate results you had invisioned for your image. We're here to help you!

Color (X)



Color (Y)



(X)



(Y)

(X, Y)



taffy tulip